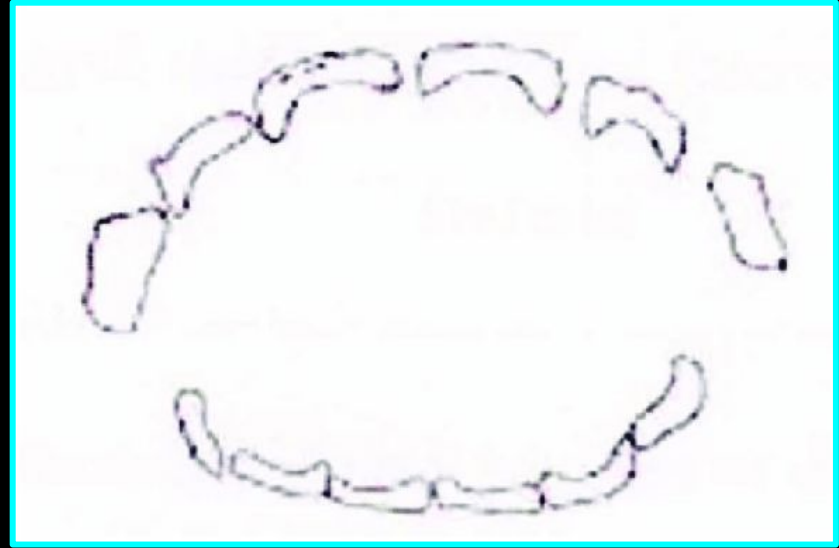


Bite Mark Impression



Bite Marks/Bite Patterns



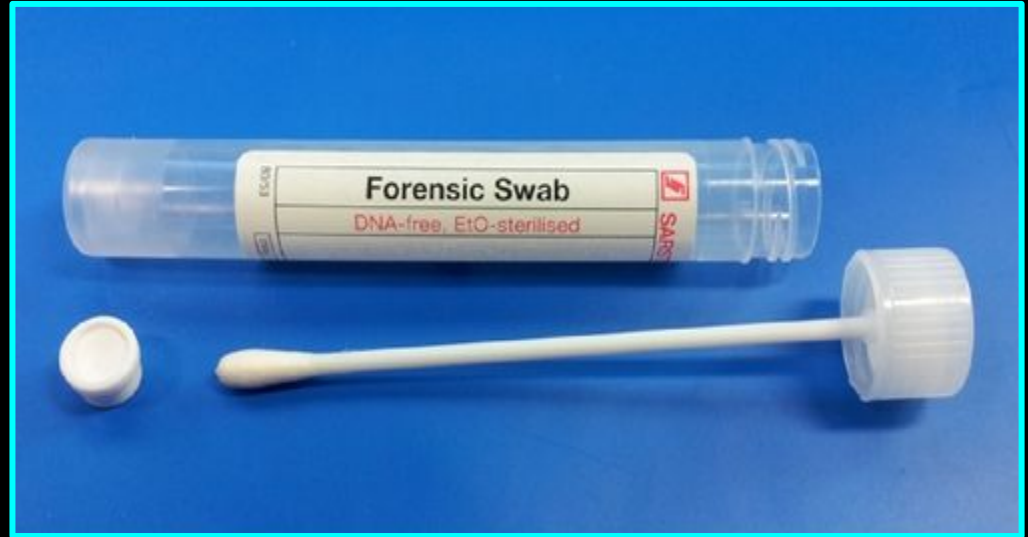
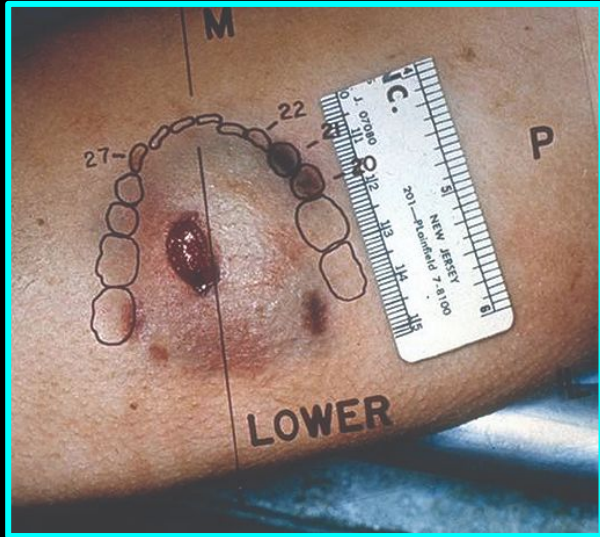
Bite marks occur when teeth actively contact and compress softer material such as flesh

Physical evidence



Bite marks may be one type of physical evidence left by criminals at the crime scene

Photos and Swabs



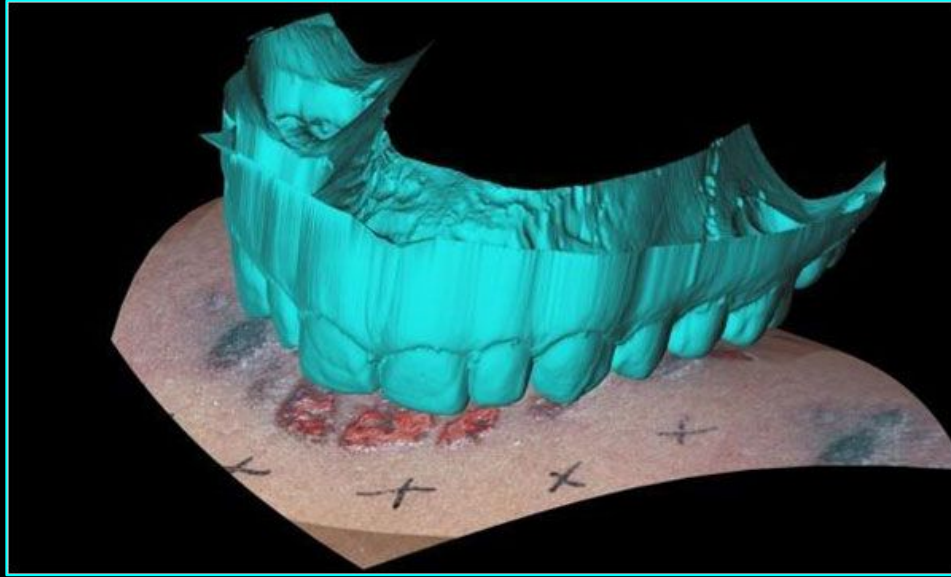
Photograph the area with a ruler. Swab the area for traces of saliva (DNA)

Bite Mark Impression



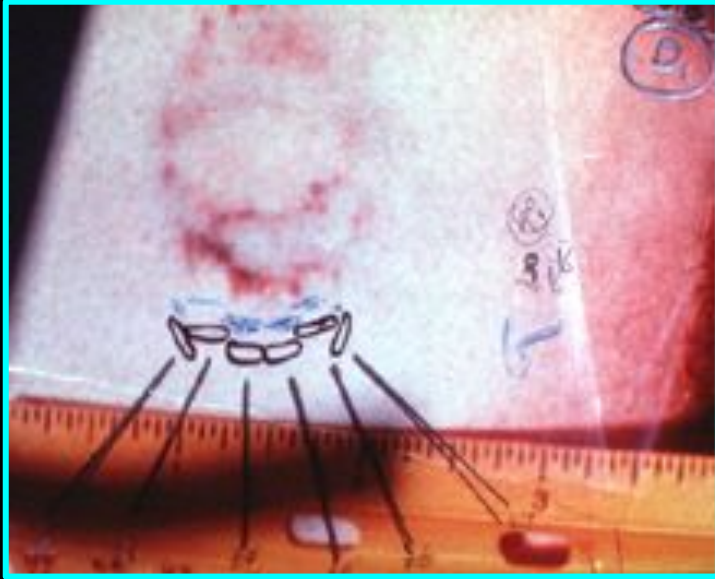
Impression material is applied to the injury site. Suspect's impression is made.

Compare Impressions



Bite mark from the victim is compared to the suspect's impression for a match

Ted Bundy Case



Serial killer Ted Bundy was tied to the murder of Lisa Levy through bites he had left on her body

YouTube

How is Odontology used to

